

PROPITCH

MAILER

2022
REVIEW

HIGHLIGHTS

UEFA EURO 2024

ProPitch is UEFA's chosen pitch consultant for the tournament and the build up for all venues being considered for EURO 2024.

The pitches are being assessed with independent visits by ProPitch consultants, remote monitoring and self assessments undertaken by ground staff leading up to the tournament. We have launched our new risk assessment and using this as a key tool for delivery.

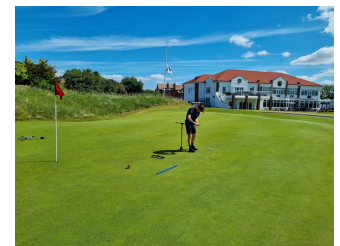


PROFITCH GOLF LAUNCH

TRUETRACK

We were delighted to bring our expertise to the golf market not just as agronomists but with market leading self assessment tool kits and software, which includes new ball roll tracking software 'TrueTrack'.

'TrueTrack' enables trueness and smoothness to be objectively and transparently measured from a phone video during stimp testing.



UEFA WOMEN'S EURO 2022

ProPitch proudly worked as the pitch consultants on 10 stadium venues and 18 team base camps and transfer training centres for the 2022 UEFA Women's Euros.

The venues included Wembley, Old Trafford, Bramall Lane, St Mary's Stadium, Leigh Sports Village, Manchester City Academy Stadium, Falmer stadium, Stadium MK.

Our involvement included pre tournament pitch assessment, agronomy advice and consultancy. We also delivered Match Day Assessments and match day delivery for the stadium venues as well as venue management and pitch improvement programs for the team base camps and transfer training camps

NEF STADYUMU, TURKEY

Home of Galatasaray, ProPitch were the chosen pitch consultants for the stadium pitch reconstruction in summer 2021 where a full pitch reconstruction took place. It was an SIS stitched hybrid pitch, with undersoil heating, drainage and an irrigation system.

We continue to provide agronomy and ongoing consultancy advice to the stadium. The club make use of our App and Portal plus the self assessment tool kit to continually gather data on the playing surface allowing data driven informed decisions on pitch performance and maintenance.





ProPitch is going into our 7th consecutive year as UEFA's pitch consultants for the Club final tournaments.

UEFA CLUB FINALS 2022

ProPitch is proud to test the pitches for the world's elite club competition finals since 2016:

- Stade de France in Paris for the UEFA Champions League
- Roman Sanchez-Pijuan in Sevilla for the UEFA Europa League.
- Arena Kombetare in Tirana for the UEFA Europa Conference League
- Juventus Stadium in Torino for the UEFA Women's Championship League
- Olympic Stadium in Helsinki for the UEFA Super Cup.

UEFA CLUB FINALS 2023

We look forward to continuing the Pitch Quality Programme in 2022/23

- Ataturk Stadium in Istanbul
- Philips Stadion in Eindhoven
- Puskas Arena in Budapest
- Eden Arena in Prague.

With the equipment, expertise and ProPitch portal, we are able to assess the pitches monthly very easily with self assessments done by the ground staff in conjunction with the independent visits via the ProPitch consultants.

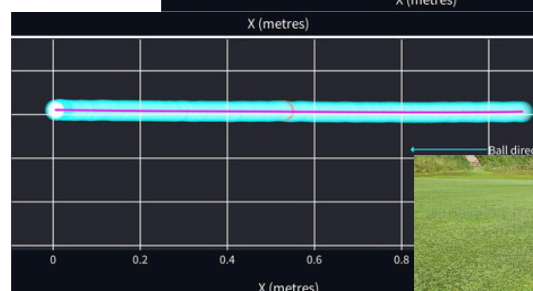
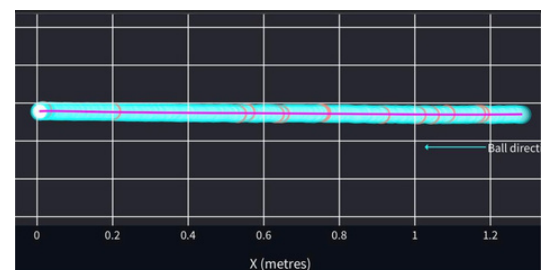


DP WORLD TOUR CAZOO CLASSIC: HILLSIDE GOLF CLUB

ProPitch's first tournament delivery golf project involved the team being on site across all four tournament days of the DP World tour Cazoo Classic hosted by Hillside Golf Club.

Our scope was testing through out the tournament and supporting with the interpretation of the data so the links manager could make informed decisions on maintenance practices for the course set up prior to each round of play.

ProPitch also utilised the TrueTrack service to record green trueness and smoothness, in very challenging climatic conditions,



TrueTrack Data

PROPITCH EQUIPMENT + APP



CLIENTS USING PROPITCH

ProPitch equipment and portal are built to give you the valuable information in the palm of your hand, literally. We proudly have teams, ground staff, venues and independent clients utilising our kits and app for pitch data collection.

Some of the teams, consultants and venues include:

- Rangers
- Tottenham Hotspur
- Arsenal
- Champney Springs
- Lille
- Swedish FA

In 2022 we have collected just over 50 000 data points, that's 137 data points per day on natural pitches



Standard Kits ready to be delivered



Field Marshal

LEAGUES USING PROPITCH



Two example leagues, The Greek Super League and The Danish Superliga, will utilise our system in 2023 within their pitch development or licensing programmes, providing a supporting pitch passport system for the ground staff to achieve great things.

The ProPitch system has a unique ability and capacity to support multi stakeholder licensing or development programmes.



EVENTS

SALTEX: BIRMINGHAM

Once again, a great opportunity to exhibit at one of the most popular trade shows within the turf industry, put together by the Grounds Management Association. As always, it was great to catch up with existing customers and showcase our services to those who may not already be familiar with ProPitch.



ESSMA SPONSOR

ProPitch was very proud to be an ESSMA sponsor, presenting at the 2022 ESSMA Pitch Workshop in Seville, where coincidentally we were UEFA pitch consultants for the 2022 Europa League final between Frankfurt & Rangers.

With more than 350 members from numerous leagues and federations, they have a strong network in Europe to discuss sector related topics and reach common insights.

We look forward to continuing to contribute towards further professionalisation of the European stadium industry.

SWEDISH FA

BOSÖN ,STOCKHOLM

Headquarters for the Swedish Sports Confederation, ProPitch provided pitch testing demonstrations and presentations to the delegates at the conference including the Swedish FA consultants utilising the ProPitch system.

Knowledge transfer of available tools, software and most importantly data interpretation is key to improving playing surfaces and we commit to sharing this on a global stage.



SUPER LEAGUE GREECE CONFERENCE

With our partner in Greece, Grassform, we were part of a delivery team presenting to the ground staff and key personnel for Greece's top flight league, the Super League. They are now in their second season utilising ProPitch software and tools to monitor and manage pitches with development plans to drive the pitch quality upwards.

This included presentations from Ian Craig and Niall MacPhee covering data interpretation through case studies while updating on innovation and the new FIFA quality programme for hybrid and natural surfaces.

The Super League in 2023 will start using the 'Pitch Rater' player perception app, used by UEFA in club competitions, supplied by Sports Labs to help correlation between player feedback and test results.



SUPERLIGA KICKOFF

NATURE ENERGY PARK ODENSE, DENMARK



EURO 2024 KICKOFF

DFB CAMPUS, FRANKFURT, GERMANY



BIGGA BTME

HARROGATE, ENGLAND

