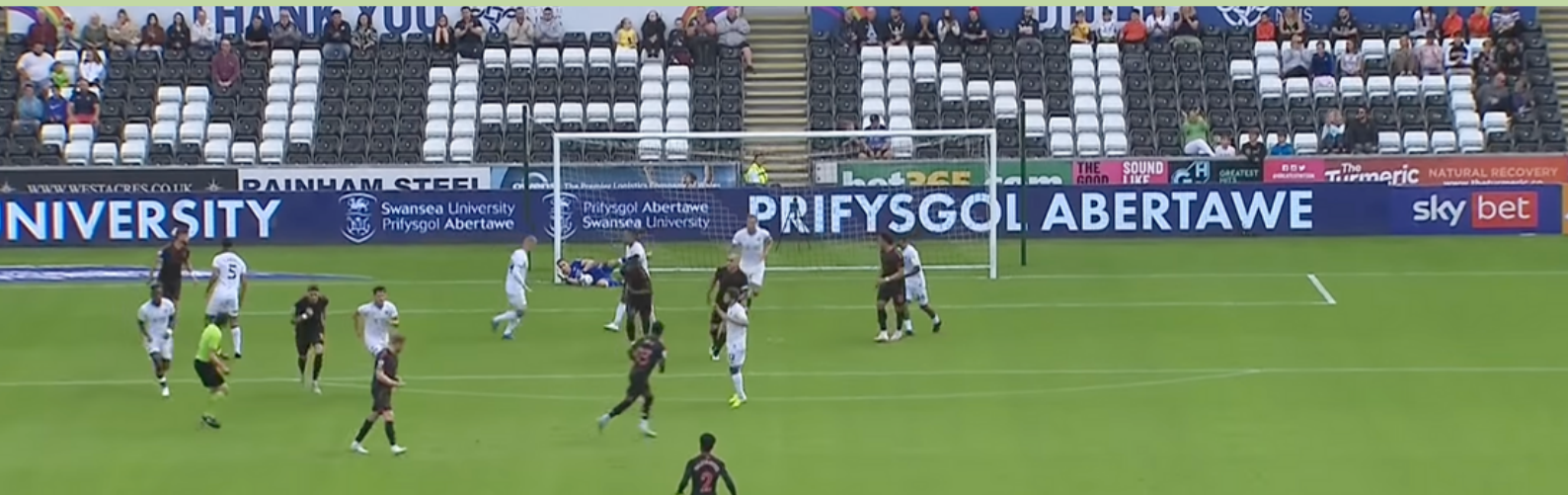




## SWANSEA CITY AFC, LIBERTY STADIUM



### PITCH RECONSTRUCTION CONSULTANT

23rd August 2021

The pitch at Liberty Stadium, Swansea had a number of problems over the winter of 2020/2021 and a decision was made by the Club to extensively renovate in the closed season in May 2021.

The pitch for the end of the 2020/2021 season was a 'lay and play' carpet backed hybrid turf system which was laid back in January 2021 as a temporary fix to solve ongoing problems with the pitch.

ProPitch had been advising the Club during the temporary renovation and were also appointed to take on the consultancy role to monitor the installation of the new hybrid stitched pitch in May by South Wales Sports Grounds and SIS.

In the consultant role ProPitch gave specialist agronomic and sports pitch construction advice based on our team's experience and proven track record of success. Critical to a successful delivery is key stage inspections during the construction and laboratory analysis of soils and aggregate material, both existing and imported, to ensure material compatibility.

Design advice  
& guidance

Construction  
material testing

Agronomic  
analysis

ProPitch system  
assessments



## REMOVAL OF EXISTING PITCH

The first stage after project scope was to remove the existing lay and play carpet and some of the existing base overlying the heating pipes. Review of contractors proposal and feedback on it. Vegetation was removed with a fraise mower to expose carpet hybrid backing, 4 days, carpet and infill was lifted and transported to the training centre where it was relaid.



## IMPORTING NEW ROOTZONE

An upper rootzone of an zeolite ameliorated sand was imported and spread to final level with further independent key stage inspections. The material was checked for compatibility underlying sand.



## HYBRID STITCHING

After the grass had sufficiently established the stitching of the turf was completed with SIS Grass fibres were stitched into the soil profile to a depth of 200mm. Approximately 5% of the surface is made up of artificial fibres.



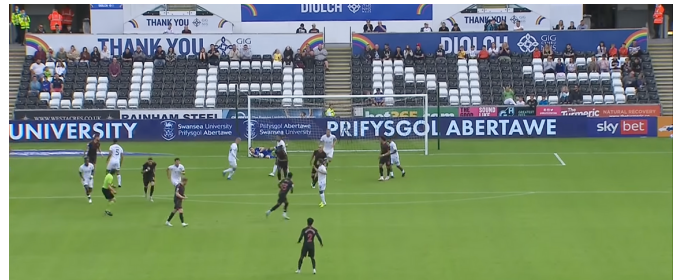
## EXISTING LOWER ROOTZONE

The existing lower rootzone consisting of sand layer over gravel raft and drainage network was then exposed and assessed for suitability in the new construction. Key stage inspections were carried out by ProPitch consultants including material taken offsite for identification and physical testing.



## GRASS ESTABLISHMENT

After the rootzone was imported and installed the grass cover was re-established from seed. The grass was allowed to establish for 3 weeks to achieve sufficient stability before stitching.



## FIRST GAME VERSUS SOUTHAMPTON

MD -3, 31st of July, the surface was ProPitch 18 tested for player interaction, ball interaction and agronomic condition. The ProPitch portal and app has now set a datum for future trending and benchmarking.